



September 2025
Issue 2.1

WELCOME BACK NEWSLETTER

Dear Families and Friends of The Duke of Norfolk,

Welcome to the Autumn term and the new school year 2025-2026! I hope that everyone has had a good rest over the holidays and managed some family time together. We were really looking forward to welcoming our new starters to Dukes this week as well as everyone back to school into their new year groups. We hope that the transition is smooth. It does take a bit of time for some children to settle back into new routines and adjust. If you have any concerns that we can help with or any information that would help us to support your child in school, please do contact us via the school office. We are always happy to help.

It is with great pleasure that we welcome some new members of staff to the Dukes team for this academic year. Miss Taylor, who is our newest member of the teaching team will be working in Apple Blossom class this year. We also welcome Miss Hartley, who will be supporting the Blossom classes in her role as a teaching assistant and we also welcome three new midday staff to the lunchtime team. I know from speaking with them all, they are all looking forward to joining us.

Yours with best wishes

Mrs. S Barker

Headteacher

There are a couple of reminders that I would like to share with you as we start the new term. Firstly due to allergies we are a nut free school, please carefully check food packing, especially if your child is on a packed lunch.

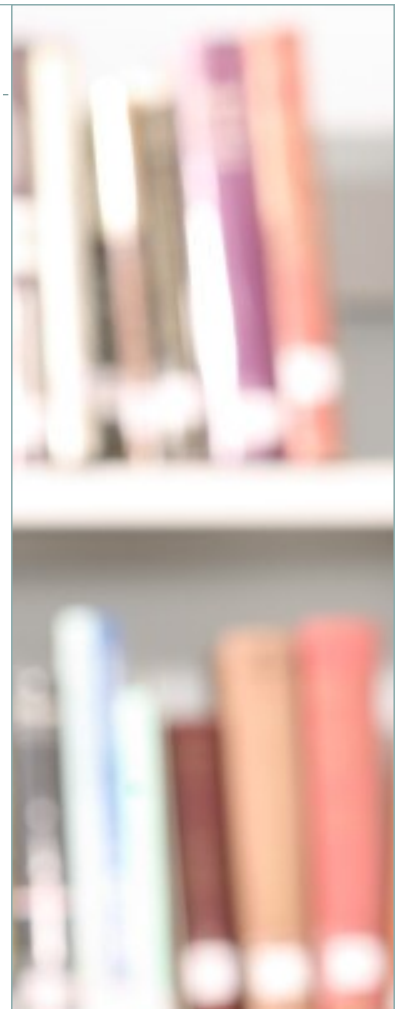
School timings for Early Years: Doors open at 8.45am for register at 8.55am and the end of the school day is 3.25pm Key Stage 1 and Key Stage 2: Doors open at 8.50am for register at 9.00am and the end of the school day is 3.30pm

We can only release children to adults other than parents/emergency contacts if we have received notification prior to home-time and ideally before lunchtime if there are changes so that we can get messages to the teachers. We cannot release children to teenagers under the age of 16 and children in Years 1-4 must be collected from their classroom entrance doors.

If your child is in Year 5 or 6 and you give permission for them to walk home independently, please email the school office or put it in writing, so that we have your consent on record and the days in which you would like them to walk home.

Please note, the gates on both playgrounds and the internal main gates will be locked at 3.45pm each evening for the safeguarding of pupils attending Night Owls or after school clubs. If you are collecting your child after this time please enter the site via the main entrance on Royle Avenue.

If I could remind parents that you **must not enter the school building except via the main entrance** and if you need to go beyond the main reception area then you **must sign in and wear a visitor's badge**. I know this is an inconvenience, but it is an 'inconvenience' in order to safeguard all the children in our care.



INSIDE THIS NEWSLETTER

Welcome Back
Reminders
Mobile Phones
Wrap Around
Resources Donation
Cauliflower Cards
Uniform
Prem Aware Award
Attendance
Contact Details
Secondary Education
Key Dates
INSET Dates

MOBILE PHONES

Children are not permitted to have their mobile phones or SMART watches with them during the school day. This is to safeguard all children at Dukes. There has also been much debate regarding this in the national news over the last week. We as a school understand that many parents especially in year 5 and 6 like their child to have a mobile on them for safety reasons as they walk home from school, therefore we ask that all children hand their device to their class teacher at the start of the school day, where it will be looked after.

EARLY BIRDS AND NIGHT OWLS

There are some changes to our popular Wraparound Care offer this year. Breakfast Club (Early Birds) runs from 7.30am and includes breakfast for the pupils who attend. The price for this provision is £5.50 per session. This club is led by Miss Bresciani. After School Club (Night Owls) will continue to run until 5.45pm, the price for this is £8.50 per session. If you are entitled to pupil premium funding you may be eligible for a reduce rate. Please contact Miss Wilmot via wraparound@dukenorfolk.derbyshire.sch.uk for details and any questions you may have.

RESOURCES DONATIONS

We are kindly asking for donations of any unwanted toys and books that are in good condition. These donations support playtimes, wellbeing interventions and our wraparound care in school. Please see list below:

- Toy cars
- Lego/bricks
- Baby dolls/Barbie dolls
- Small buggies for dolls
- Small world resources such as dolls houses, garages, farmyards, a zoo
- Toy figures, e.g. superheroes, animals, robots,
- Craft resources
- Games
- Bean bags
- Books, especially for junior school children

CAULIFLOWER CARDS

I am sorry to mention the dreaded 'C' word... but over the next 2 weeks your child will bringing home their 'Cauliflower Cards' Christmas design for you to order any Christmas Cards/ wrapping/ gifts. Cauliflower Cards is a fantastic way to raise much needed school funds, so we thank you very much for any and all orders you place.

The designs will be with you no later than the 22nd September, and must be returned on the 29th September.

Many Thanks

Mrs. Pendlebury

UNIFORM

Please ensure you check our uniform list. We request that your child always comes to school in the correct, full school uniform and footwear. It is also important at this time of year that they have a waterproof coat for breaktimes. Please ensure they also have the correct PE kit. If you need any uniform for your child that is second-hand but in good condition, please visit Hummingbirds uniform shop.



PREM AWARE AWARD

While being born early does not mean a child will have special educational needs, it does increase the chances.

At Dukes, we are recognising children that are born before 36 weeks so that we can signpost appropriate support if required. We are wanting to receive the Prem Aware Award and request that parents support school by disclosing if their child was born before 36 weeks. Mrs Hadfield is ensuring that staff have the relevant training, and the school governing body also recognise the impact that prematurity can have on a child's life. If your child was born before 36 weeks, then please mention this to your child's class teacher or send an email to Mrs Hadfield via k.hadfield@dukenorfolk.derbyshire.sch.uk. Please see the attached poster at the end of this newsletter.

ATTENDANCE

Attendance continues to be one of our highest priorities and we will do anything we can to help your child to attend school regularly. If you are struggling with getting your child to school on time and need support with their morning routine, we are always here to help!

If you do need to request an absence from school which is going to affect your child's attendance, can we please kindly remind all families to notify school via the school attendance email address which is, absence@dukenorfolk.derbyshire.sch.uk

CONTACT DETAILS

If your emergency contact details have changed over the summer and/or your child has a medical condition/allergy that is not on the current data sheet or there has been a change in circumstances please would you let your child's class teacher and the school office know as soon as possible.

SECONDARY EDUCATION

The application process for children currently in Year 6 who transfer to Secondary Education in September 2026 opened the 8th of September and will close on the 31st of October 2025. Please follow the advice and advice given on Derbyshire County Councils website at www.derbyshire.gov.uk/admissions

KEY DATES

SEPTEMBER & OCTOBER

Monday 15th September—After school clubs restart

Tuesday 16th September—Swimming restarts for Oak class

Thursday 18th September—EYFS Parents Coffee Morning

Monday 22nd September—Cauliflower Cards home to families

Thursday 25th September—Cross Country—details from Mr. English

Monday 29th September—Reading Café for years 5 and 6

Monday 29th September— Final day for Cauliflower cards returns

Wednesday 1st October Harvest Festival

Monday 6th October—Musical Theatre Visit for The Jungle Book

Monday 6th October—Sunflower Group Restarts—Invitation only, please see Mrs. Hadfield for further details

Tuesday 7th October—Year 6 Residential Parents meeting at 6pm in the school hall

Wednesday 8th October - School Photographs

Friday 10th October—World Mental Health Day more details to follow

Tuesday 14th October and Thursday 16th October—Parent Consultation Evenings

Thursday 23rd October—Flu Vaccine in school

Friday 24th October—School closes for the Half Term Holidays

INSET DATES

13th February 2026

1st June 2026

23rd July 2026





PRISM
*Premature Infants' Skills
in Mathematics*

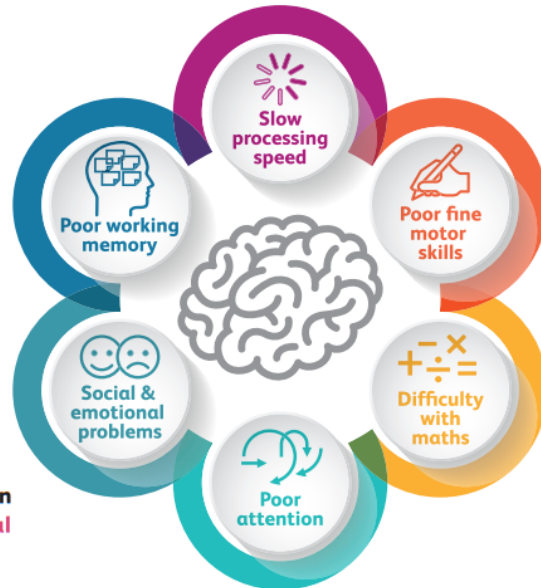
Supporting preterm born children in school

Preterm birth, before 37 weeks of gestation, can affect lifelong development and learning. Children born preterm are more likely to have additional support needs than children who were born at full term.

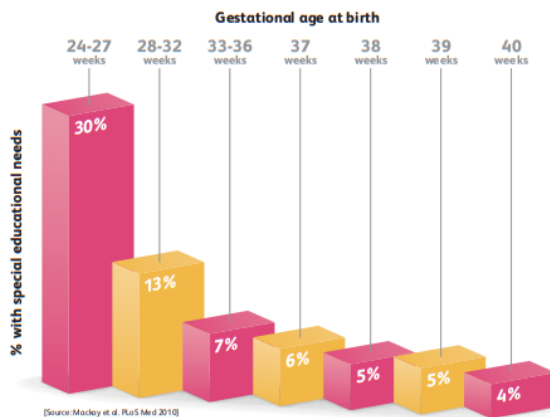
- ▶ **Two to three** children in an average sized primary school class are likely to have been born preterm.



- ▶ Children born preterm are at **higher risk** for cognitive, social-emotional and learning difficulties than children who were born at term.



- ▶ Compared with children born at term, preterm born children are more likely to have **special educational needs and lower academic attainment**.



Find out more

about preterm birth and how to **support** these children in school at

www.pretermbirth.info

FREE to use.

email: prism@le.ac.uk